

# SHREE KRISHNA ENGINEERS

Plot No.19, Gali No.1, Opposite Vijaya Bank, Sameypur, Delhi - 110042, India.

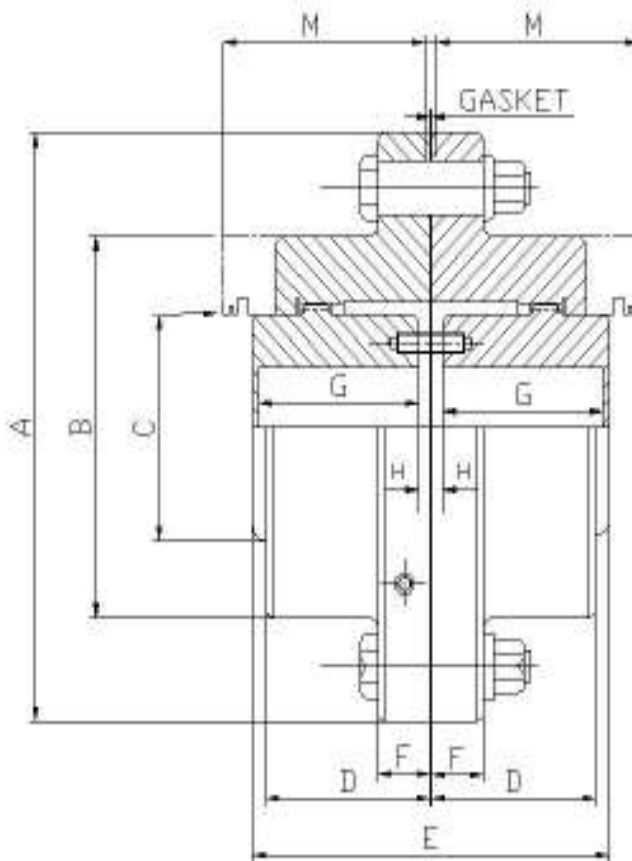
PH : +91-9891095935, 9555890934, E-mail : [info@shreekrishnaengineers.in](mailto:info@shreekrishnaengineers.in),  
[praveen@shreekrishnaengineers.in](mailto:praveen@shreekrishnaengineers.in), [ske.purchase@yahoo.in](mailto:ske.purchase@yahoo.in)

Website : [www.shreekrishnaengineers.in](http://www.shreekrishnaengineers.in), [www.gearboxmanufacturerindia.in](http://www.gearboxmanufacturerindia.in)

A Gear Coupling is a mechanical device for transmitting torque between two shafts. It consists of a flexible joint fixed to each shaft. The two joints are connected by a third part called pin. The gear teeth in a gear coupling have high backlash to allow for angular misalignment. The excess backlash can contribute to vibration.

SHREE KRISHNA Gear Couplings have highest torque capacities than any other type of couplings, thus generally used for High Torque Applications like Conveyors, Cement Mills, EOT Cranes, Elevator Drives, Ball Mill and Bowl Mill Drives, Industrial Fans, Air Compressors, Rolling Mill Drives and Mining Machinery. Proper Size of the Coupling from rating and dimensional Table can be selected after taking service factor in accordance of the application.

SKE flexible Gear Couplings have two identical toothed hubs with external teeth and two identical flanged sleeves with internal teeth, a gasket, a set of bolts, nuts and lock washers, lubrication plugs and two grease retaining seals over the hubs.



## **DIMENSIONAL TABLE**

### TECHNICAL DATA OF FULL FLEXIBLE GEARED COUPLING

Coupling Size	Rated Torque Nm	KW at 100 RPM	Max. Bore	A	G	C	B	M	H	D	E	Avg. Wt. in Kg
FF-100	497	5.2	35	150	45	50	75	55	3	39.5	93	4.2
FF-101	1002	10.5	50	170	55	65	110	65	5	49	115	11
FF-102	2492	26.1	60	185	70	85	125	80	5	62	145	15
FF-103	4486	47	75	220	85	105	150	105	5	78	175	25
FF-104	8495	89	90	250	105	130	175	125	5	96	215	39
FF-105	12982	136	110	290	110	155	200	140	10	106	230	57
FF-106	19950	209	125	320	125	175	230	155	10	117	260	85
FF-107	34936	366	140	350	140	205	260	175	10	134	290	103
FF-108	44864	470	160	380	155	230	290	190	10	147	320	138
FF-109	55841	585	180	430	165	250	330	205	10	156	340	210
FF-110	81709	856	220	490	180	310	390	220	10	171	370	277
FF-111	109391	1146	260	545	200	350	445	240	10	192	410	550
FF-112	146236	1532	300	590	240	400	490	280	10	231	490	710

\*All Dimensions are in mm.

Standard Full Flexible Geared Coupling accommodates angular & parallel misalignments or a combination of both as well as axial misalignment.

### **Selection of Gear Coupling**

1. According to the application select safety / service factor from the table.
2. Multiply the running KW/HP Power of Prime Drive with selected safety factor.
3. Convert this to design power at 100 RPM after dividing with rpm at which coupling is to run. This will give you design power of the application.
4. Refer to catalogue table at 100 RPM, the power in this table equal to power calculated at 100 RPM will show recommended coupling size.
5. Check for the maximum bore rating of the selected coupling size and in case shaft size of the drive/driven is more then coupling capacity go for the next size.

**SAFETY FACTOR TABLE**

LOAD	DRIVEN EQUIPMENT	TYPE OF DRIVE	
		Motor or Turbine	Reciprocating Engine
Extreme	Ore Crushers, Bar Stock Shears & Vibrating Conveyors.	3	4
Heavy	Air Compressors – Single Cylinder, Dredges, Drilling Rigs, Mine Machinery, Rolling Mill Drives & Rubber Mixers.	2.5	3
Light	Centrifugal Pumps, Generators – Pulsating Load, Grinders, Hydraulic Pumps, Kilns, Line Shafting, Machine Tools, Oscillating Pumps, Textile Machinery & Woodworking Machiner.	1.5	2
Medium	Air Compressors – Multi Cylinder, Ball and Rod Mills, Cranes, Elevators, Hoists, Punch Presses, Reciprocating Pumps, Shears, Ship Drives & Welding Generators.	2	2.5
Uniform	Centrifugal Pumps, Conveyors – Even Loaded, Exciters, Fans and Blowers – Light Duty, Generators – Even Loaded & Mixers – Liquid.	1	1.5

# SHREE KRISHNA ENGINEERS

Corrsp.Address : A-4/21, Ground Floor, Sector – 15, Rohini, Delhi – 110089.

Fact : Plot No.19, Khasra No.40/14/2, Gali No.1, Opp. Vijaya Bank, Sameypur, Delhi-110042. (India)

Ph: +91-9891095935, 9555890934, Email: [info@shreekrishnaengineers.in](mailto:info@shreekrishnaengineers.in),  
[praveen@shreekrishnaengineers.in](mailto:praveen@shreekrishnaengineers.in), [ske.purchase@yahoo.in](mailto:ske.purchase@yahoo.in) Website : [www.shreekrishnaengineers.in](http://www.shreekrishnaengineers.in)

We hereby introduce ourselves as manufacturer of Gears, Shafts, Helical Gear Box, Sprockets, Geared Couplings, Brake Drum Couplings & Precise Machinery Parts.

Our Company was established in 2009. We manufacture all kinds of Loose Gears, Shafts, Helical Gearbox, Geared Couplings & Precise Machinery Parts also. We manufacture all these items as per our standard catalogue and also customer's specification and drawings. With a experience in this field, we provide to our customers the best quality at competitive price.

Our company is having imported machinery for Gear Cutting like Gear Hobbing Machines, Gear Shaper Machines, Milling Machines, Gear Grinding Machines etc. We also have other Conventional Machines like Lathe, Cylindrical Grinder with Internal Attachment, Slotting Machine, Surface Grinding Machine etc.

You are very kindly requested to register us in your approved vendor list and give us a chance to serve your esteemed concern if there is any registration form from your esteemed organisation same please be issued to us So that it can be submitted to you after completion of all formalities.

Thanking You,

**Shree Krishna Engineers**  
**PRAVEEN KAPOOR**  
**Proprietor & C.E.O.**